

DDA Stakeholder Meeting

Broad Street Intersection and Entergy Utilities

Thursday, February 23, 2012

2:30 PM

City Council Chambers

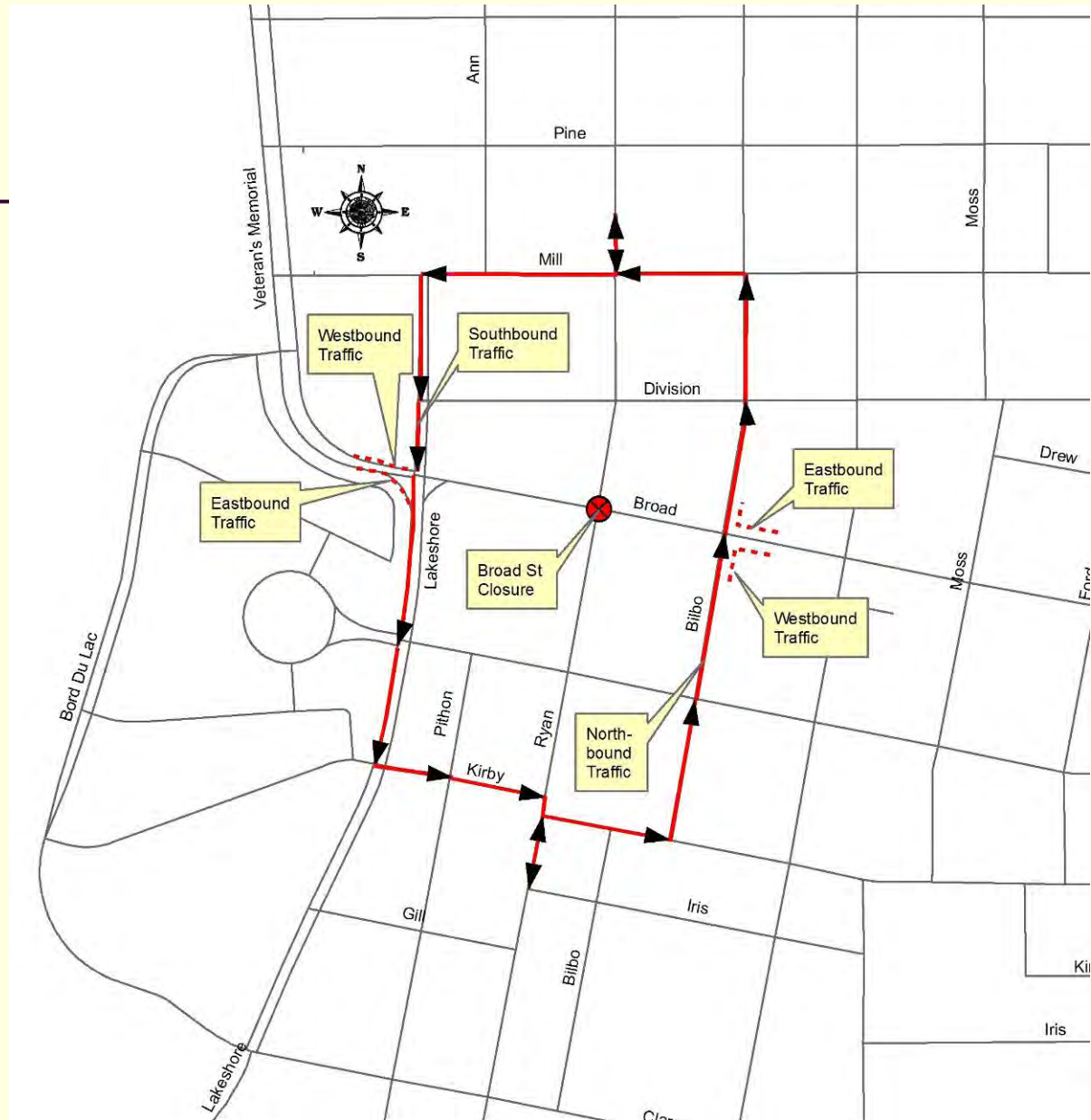
D W Jessen, Engineer

H&D Truck and Tractor, Contractor

Broad Street Intersection

- Broad Street Closure and Detour routes
- Schedule – Phases and Sequencing
 - Week of March 5 preparation begins
 - Approximately 45-60 days
- Business signage
 - Businesses may provide signage to be placed on barricades
- Parking Lot access

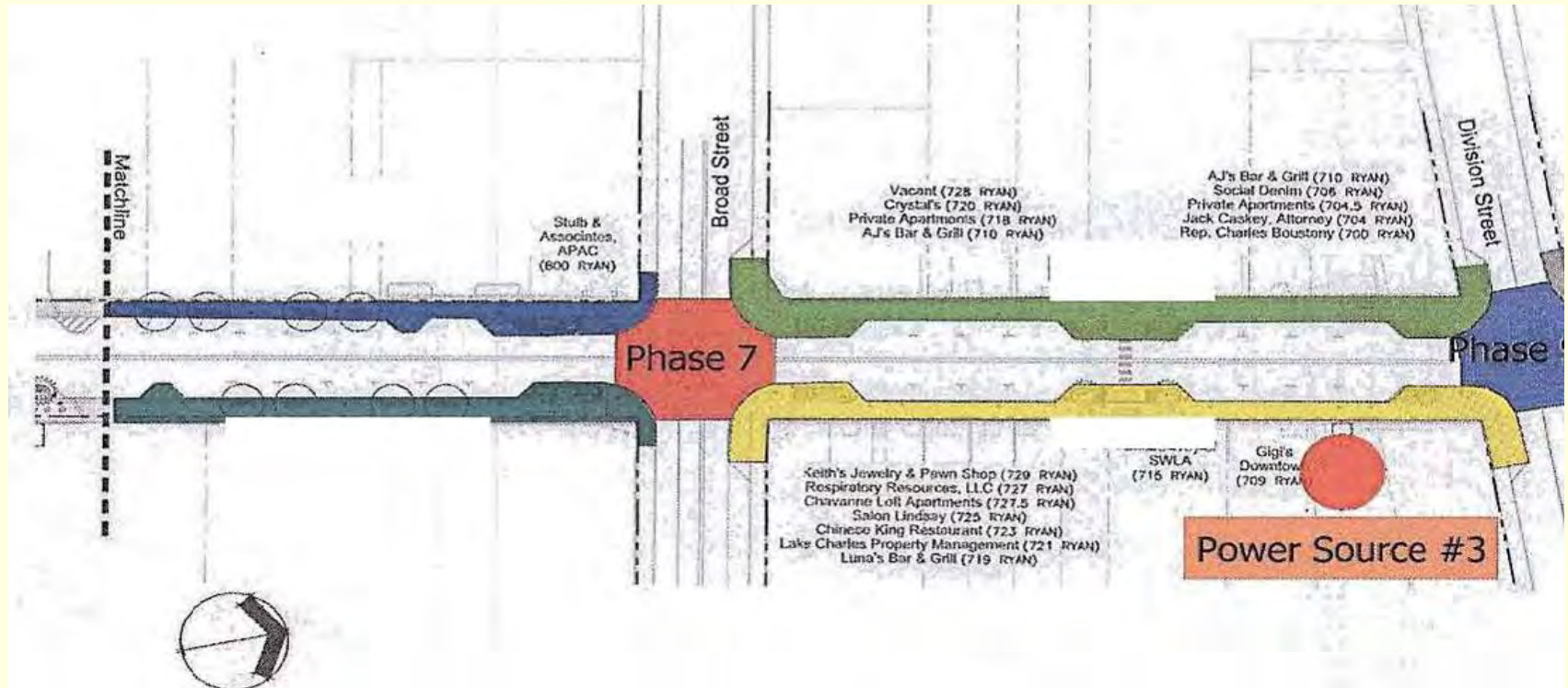
Detour Routes Broad St. Intersection



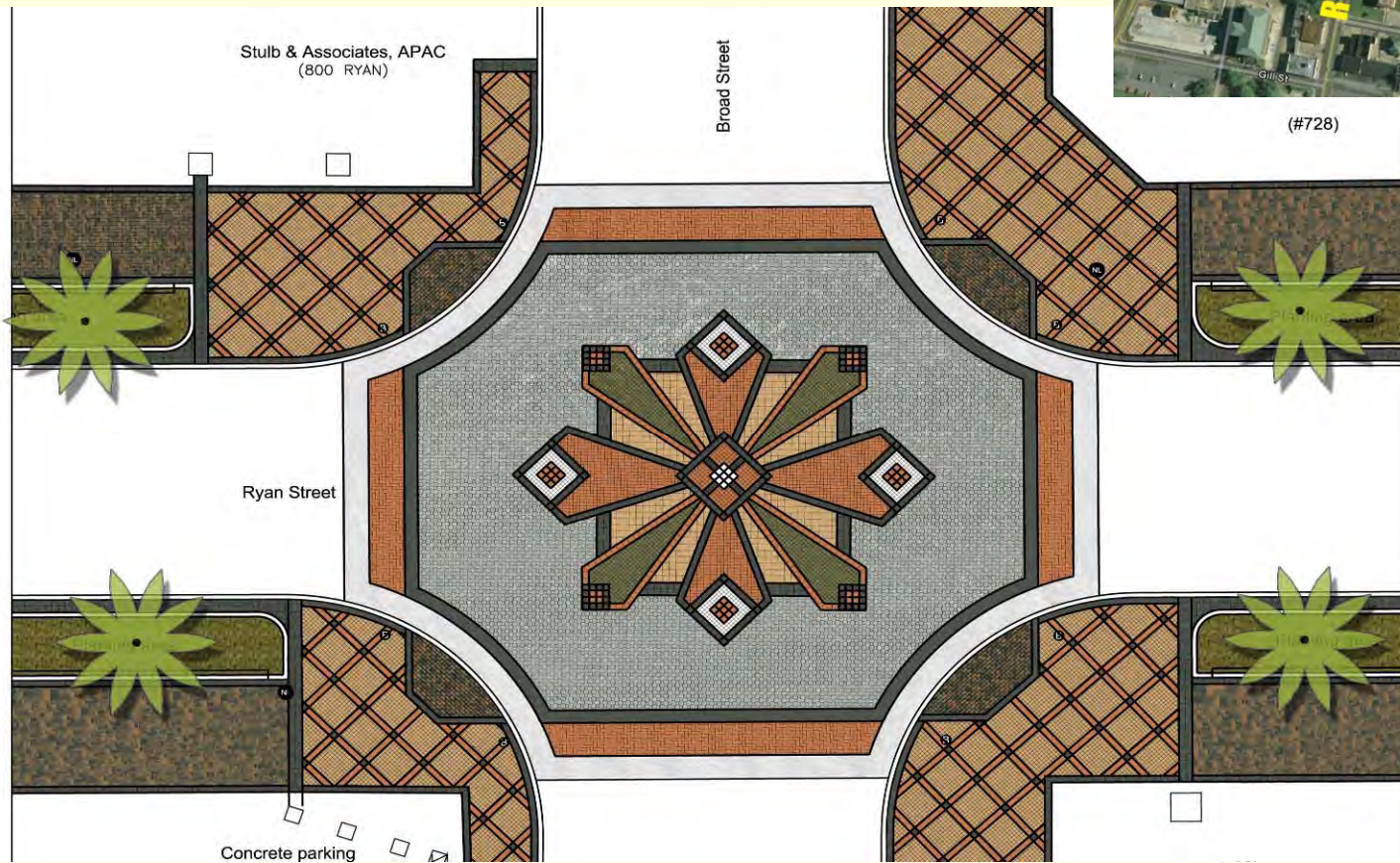
Next Phases 700 Block Ryan

- Phase Seven (Broad St. Intersection)
 - Monday 3/5/12 to Friday 4/27/12
- Phase Eight & Phase Nine (Broad to Division Midblock East and West Side)
 - Friday 4/27/12 to Monday 7/16/12

Sequencing Diagram

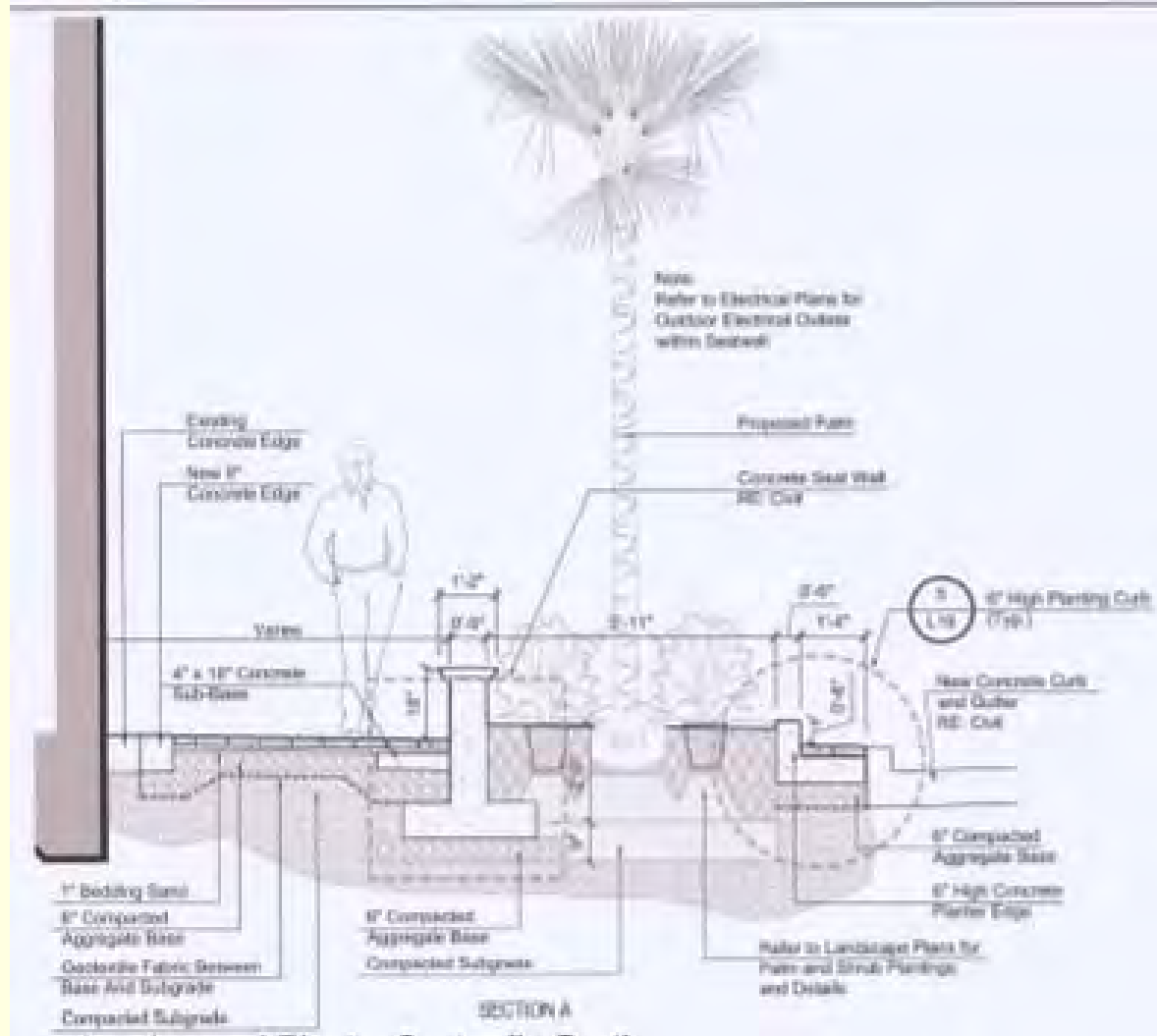


Broad and Ryan Intersection Medallion



Broad Intersection through mid 700 block

Typical Planter Detail



Sequencing for Planned Outages

Entergy Coordination Phase - 700 Block Ryan

- Ongoing coordination with Entergy
- Interruption of utilities coordination
- Electrical issues
- Begin in mid April (Approximately)
- **Scheduled Outages** - Planned in advance
 - **Weekends**
 - **Sundays April 15, 22, 29**
- Generally 7 am - 5 pm or until finished
- Building access
 - Pedestrian Bridges

700 block Ryan St. Entergy issues



Existing Conditions



700 block



Existing Conditions - Electrical feeds



Questions and Contacts

Contacts

City of Lake Charles

Downtown Development

Lori Marinovich

337-491-1429

lmarinovich@cityoflc.us

DW Jessen and Associates,
Engineer

H&D Truck and Tractor,
Contractor

Scott Sittig

Assistance for Small Businesses

- Alliance SWLA
120 West Pujo Street
Lake Charles, LA 70601
P.O. Box 3110
Lake Charles, LA 70602-3110
Phone: (337) 433-3632
Fax: (337) 436-3727
- Southwest Louisiana SCORE
PO Box 3110
Lake Charles, LA 70602
Phone: 337-480-1199
- McNeese State University - MSU Small Business Development Center
Burton Business Center Rm. 133 MSU - P.O. Box 90508
Lake Charles, LA 70609-0508
Phone: 337-475-5529