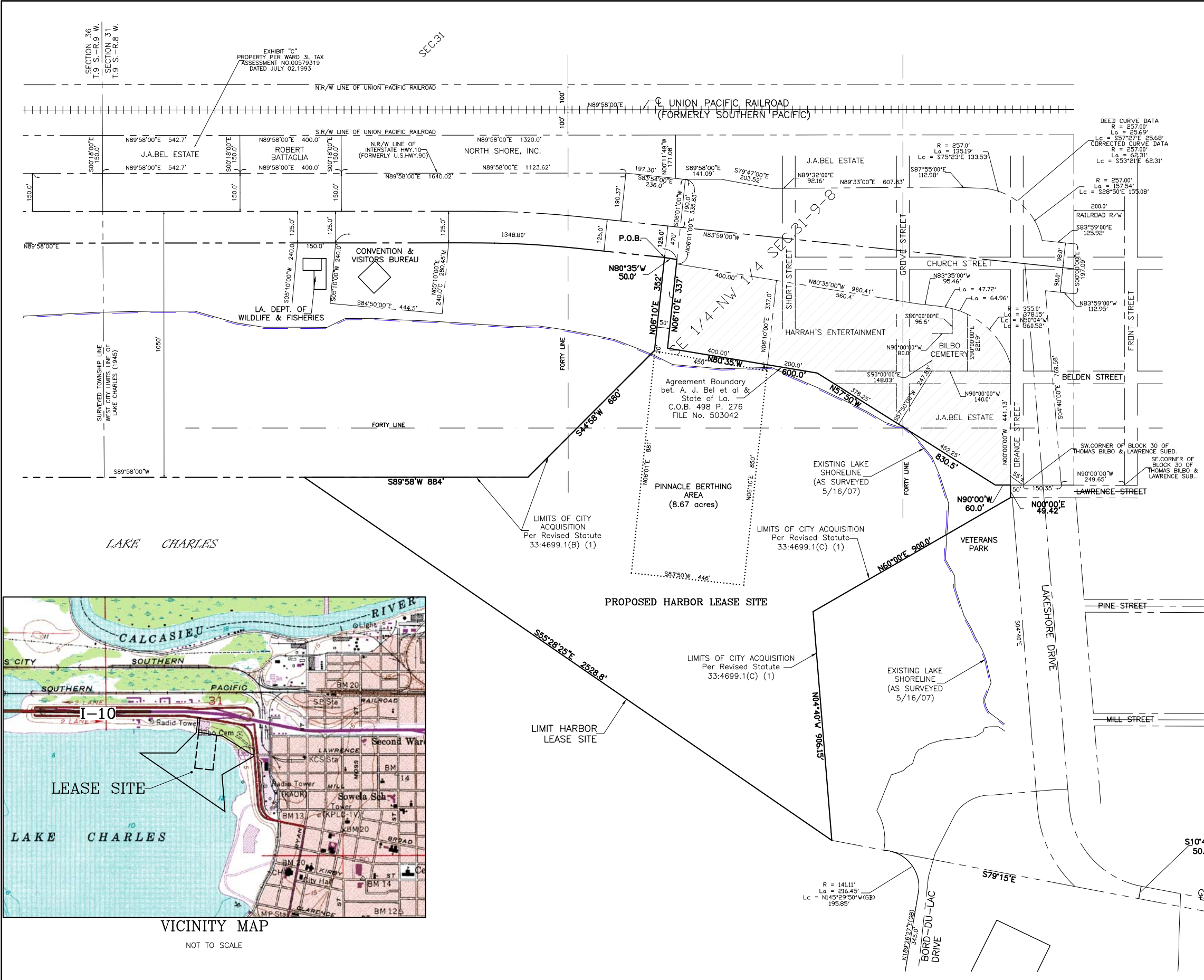


D:\Land Projects 3\LC-2006-233(Lake Shore Charter Amendment Plan)\dwg\LC-2006-233(Lake Shore Charter Amendment Plan).dwg, HARBOR, 09/11/2008 08:56:00 AM



PROPOSED HARBOR LEASE SITE  
CITY of LAKE CHARLES

Description:  
A tract of land lying in Section 31, Township 9 South, Range 8 West, La. Mer., in the City of Lake Charles, Parish of Calcasieu Louisiana, and on the shore, bottom and bed of Lake Charles, to-wit:

A tract of land lying in Section 31, Township 9 South, Range 8 West, in the City of Lake Charles and the Parish of Calcasieu, beginning at a point 125 feet South, 6 degrees and 10 minutes West of the center line of U. S. Highway No. 90, also known as Interstate 10 (said center line shown on the plans of the Louisiana Department of Highways State Project No. 3-30-07, dated October 25, 1950), and North 80 degrees 35 minutes West a distance of 50 feet from a prolongation of the West line of the J. A. Bel, et al property (as per agreement boundary between J. A. Bel, et al and the State of Louisiana in accordance with plat filed in records of the Parish of Calcasieu in Plat Book No. 6, page 57) for a point of commencement;

Thence along the boundary per Revised Statute 33:4699.1(B) (1) between the City of Lake Charles and the State of Louisiana, South 6 degrees and 10 minutes West a distance of 352 feet more or less; Thence South 44 degrees and 58 minutes West a distance of 680 feet, more or less to a point which is 1050 feet South of the center line of U. S. Highway No. 90; Thence South 89 degrees and 58 minutes West following along a line parallel to and 1050 feet South of the center line of U. S. Highway No. 90 a distance of 884 feet to a point;

Thence South 55 degrees 28 minutes 25 seconds East a distance of 2528.8 feet to a point, said point being on a Westerly prolongation of a line, said line being South 10 degrees and 45 minutes West, a distance of 50 feet from the center line of Broad Street and parallel to Broad Street, and said line having a true bearing of North 79 degrees and 15 minutes West;

Thence along the boundary per Revised Statute 33:4699.1(C) (1) between the City of Lake Charles and the State of Louisiana, North 04 degrees 40 minutes West a distance of 906.15 feet; Thence North 60 degrees 00 minutes East a distance of 900.0 feet;

Thence North 00 degrees 00 minutes East a distance of 49.42 feet;

Thence North 90 degrees 00 minutes West a distance of 60.0 feet;

Thence North 57 degrees 50 minutes West a distance of 830.5 feet;

Thence North 80 degrees 35 minutes West a distance of 600.0 feet;

Thence North 06 degrees 10 minutes West a distance of 337.0 feet;

Thence North 80 degrees 35 minutes West a distance of 50 feet to the point of beginning.

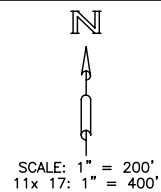
Less and Except:

That portion identified as Pinnacle Berthing Area, per Memorandum of Lease from the State of Louisiana to Players Lake Charles for use of the waterbottoms and adjacent properties dated August 14, 1995.

Containing 42.57 acres more or less.

- NOTES:
- THE PURPOSE OF THIS PLAT IS TO CREATE A LEGAL DESCRIPTION OF THE TRACT OF LAND TO BE LEASED.
  - THIS PLAT WAS MADE FROM INFORMATION ON FILE IN THE OFFICE OF D. W. JESSEN & ASSOCIATES, LLC AND DOES NOT REPRESENT A GROUND SURVEY.
  - REFERENCE PLATS OR PLANS:
    - PLAT SHOWING CONVEYANCE OF PROPERTY FROM THE LOUISIANA STATE DEPT. TO THE CITY OF LAKE CHARLES, DATED REVISED FEBRUARY 7, 1984. OUR FILE No. 34-025.
    - PLAYERS LAKE CHARLES, INC. PLAT DATED AUGUST 3, 1993. OUR FILE No. 44.086.
    - PLAYERS LAKE CHARLES, INC. TOPOGRAPHIC & BOUNDARY SURVEY OF J. A. BEL PROPERTY WEST OF U. S. HIGHWAY No. 90 - BUSINESS DATED SEPTEMBER 2, 1993. OUR FILE No. 49-023.
    - CITY OF LAKE CHARLES PROPOSED LEASE OF AMERICA'S WETLANDS DISCOVERY CENTER, INC. DATED AUGUST 25, 2005. OUR FILE No. 64-095.
    - EXHIBIT 'A', CHARTER OF THE CITY OF LAKE CHARLES SEC. 7-09(a) LAKEFRONT DEVELOPMENT PLAN DATED MARCH 7, 2007. OUR PROJECT No. LC-2006-233.
    - THE BEARINGS SHOWN HEREON WERE DERIVED FROM THE PLANS CITED (B) ABOVE.

PRELIMINARY  
FOR REVIEW ONLY



				DRAWN	M. W. Leger
				APPROVED	D. W. JESSEN, JR.
				DATE	09/10/08
				ACAD FILE	LC-2006-233(Lake Shore Charter Amendment Plan).dwg
				REFERENCE	N/A
No.	DATE			BY	FIELD BOOK
					N/A



D. W. Jessen & Associates, LLC  
Civil and Consulting Engineers Lake Charles, Louisiana  
440 Kirby Street Lake Charles, LA 70601  
Phone: (337)433-0561 Fax: (337)433-5842  
D. W. Jessen, Jr., P.E., P.L.S.  
C.E. La. Reg. No. 21449 P.L.S. La. Reg. No. 4646

PROJECT No. LC-2006-233  
CITY OF LAKE CHARLES  
PROPOSED HARBOR LEASE SITE  
CITY of LAKE CHARLES

EXHIBIT 'A'

SHEET NUMBER

01