

Millennium Park Phase II Gill Street Extension

10:30 AM on March 13, 2012

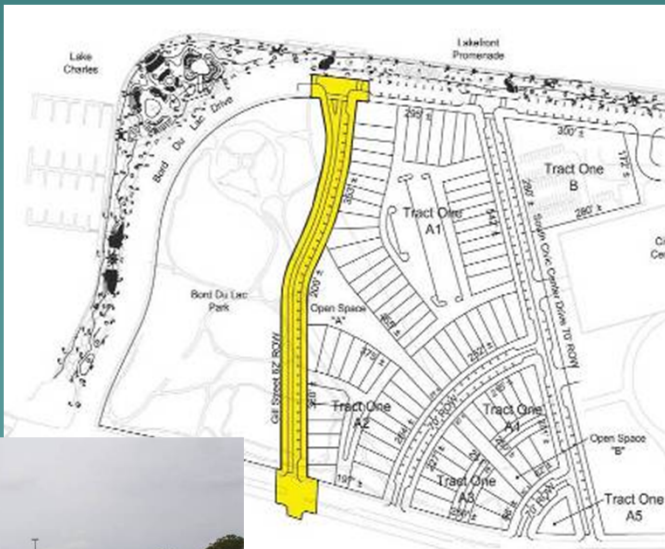
10th Floor - City Hall

326 Pujo Street

Randy Roach, Mayor


A stylized, layered mountain range graphic in shades of teal and blue, located in the bottom right corner of the slide.

Gill Street Extension



- ◆ A&E: D W Jessen
- ◆ AFC: \$3,400,000
- ◆ Funding source(s): \$1.17M DRU-CDBG-Rita /Bond / Capital Outlay
- ◆ Contractor/Bid: McManus Construction, Inc. \$2,286,293
- ◆ Advertisement date: November 17, 2011
- ◆ Received Bids: December 13, 2011
- ◆ Award Bid: December 21, 2011
- ◆ NTP est. date: April 2, 2012
- ◆ Est. Completion Spring 2013

Gill Street Extension Project Scope of Work

- ◆ **Paving:** the reconfiguration of the existing hard surface, installation of a new concrete roadway with stone base, and the installation of new concrete sidewalks with pavers;
 - ◆ **Drainage:** the reconfiguration of a new underground drainage system;
 - ◆ **Sewer:** the reconfiguration of the sewer line, installation of a new underground sewer line system, including a new sewer lift station, and a new six inch sewer force main;
 - ◆ **Water:** installation of a new water line and abandoning of the existing water main; and,
 - ◆ **Electrical:** installation of new street lights, and installation of a new electrical
- 
- A stylized, dark teal silhouette of a mountain range is positioned in the bottom right corner of the slide, partially overlapping the bottom edge of the text area.

[illegible]

Aerial View Bord du Lac Park Master Plan Area



Millennium Park – Phase II



- ◆ A&E: Randy Goodloe
- ◆ Total AFC: \$2.2 million
- ◆ Funding source: Bond and City
- ◆ Complete Children's Park section with amenities in area surrounding community-built park
- ◆ Millennium Park Phase II Contractor/Bid: Trahan Construction
- ◆ Advertisement date: November 4, 2011
- ◆ Receive Bids: December 6
- ◆ Award Bid: December 21
- ◆ NTP est. date: February 2012
- ◆ Estimate for completion: Fall 2012

Concept Plan – Millennium Park



Millennium Park – Phase II

Some of the major elements of the Children's Playground include:

- ◆ a major shade structure at the new entrance
- ◆ an entry gateway at Millennium Park
- ◆ security fencing surrounding the entire site with one main public entry
- ◆ brick paver accent areas
- ◆ a grassy lawn area with benches and shade structure a fossil dig shade pit with shade structure;
- ◆ outdoor seating including benches as well as picnic tables with either a shade structure or shade provided by landscaping;
- ◆ a new pavilion structure, which will encompass a covered open area and include restrooms and a concessions area with storage
- ◆ outdoor seating areas for a concessions stand and will be furnished with tables with umbrellas and chairs for seating;
- ◆ a splash park with slip resistant paving brightly colored to go along with the theme of the design

Entry Plaza



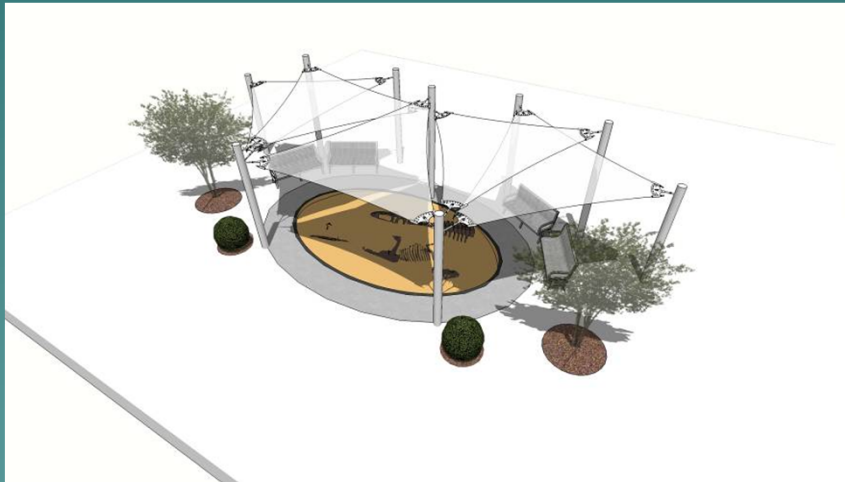
Entry Plaza



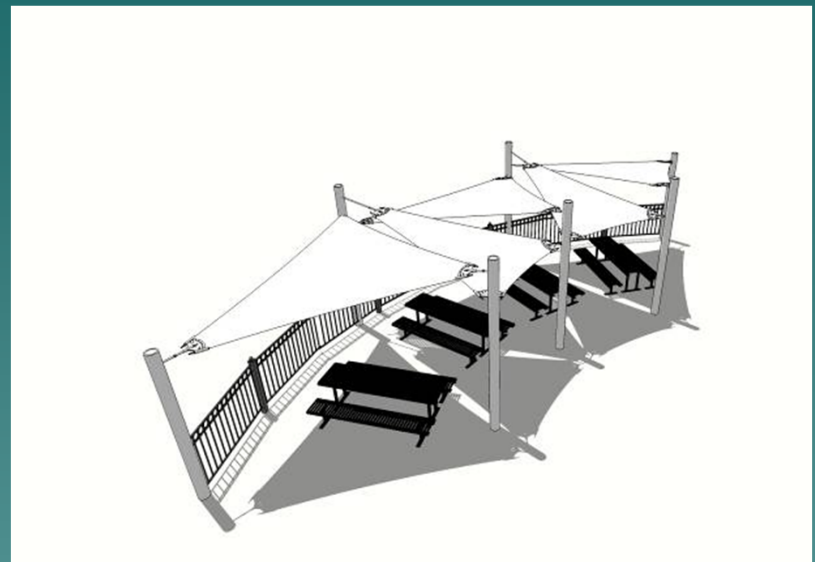
Concession Pavilion



Fossil Dig Area



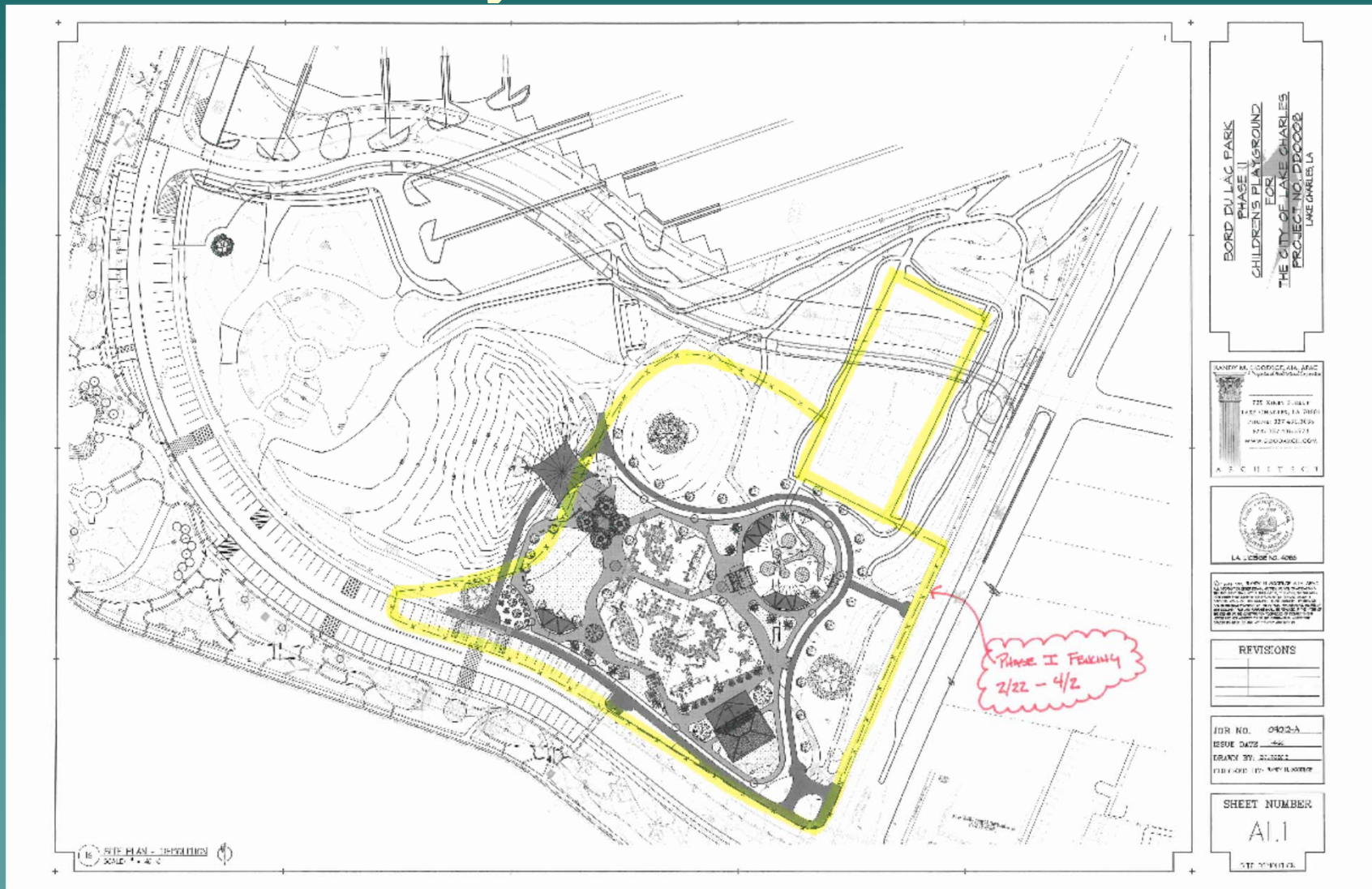
Shade Structures



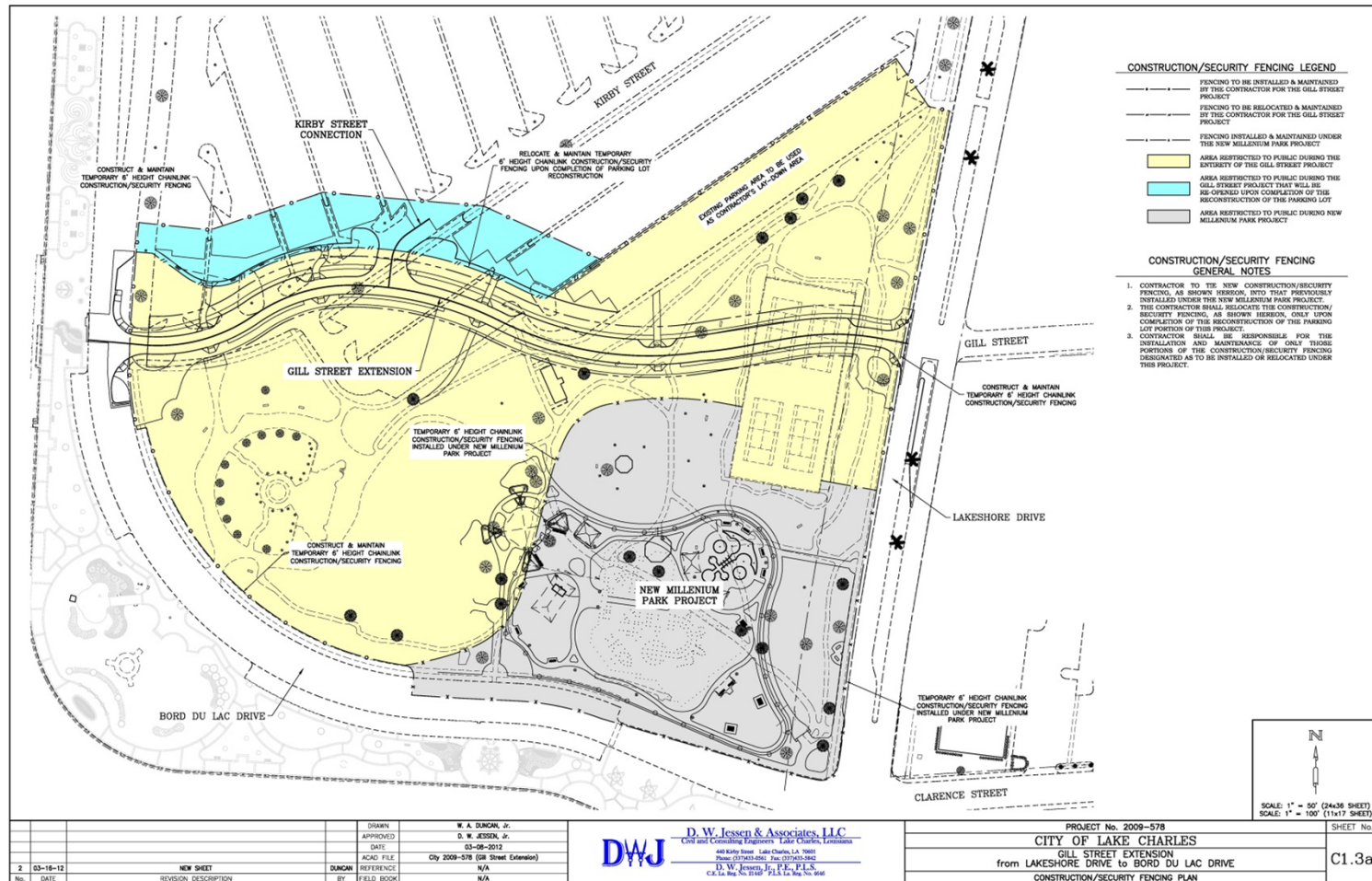
Splash Park Concept




Phase One Fencing February thru March 2012



Gill Street Overall Fencing plan



Construction Concerns

- ◆ Information on Park Hours and access during construction can be obtained by calling City Parks and Recreation at 491-8731
 - ◆ Parking lot access during construction may be limited due to temporary road closures
 - ◆ Temporary restroom Port-a-lets will be provided during construction
- 
- A stylized, layered mountain range graphic in shades of teal and blue, located in the bottom right corner of the slide.

Questions and Comments

John Cardone, 491-1381

Lori Marinovich, 491-1292

lmarinovich@cityoflc.us