



# Red, White, Blue and You

## The City of Lake Charles Invites you to Join the Parade

### 6 PM; Thursday, July 4, 2019

1. Line-up will begin at 4:30 pm on Pine Street facing east. Pull onto Pine from Lakeshore Drive. Parade Staff will direct you. The parade will roll at 6 pm.
2. Parade line-up is first come, first placed. No line-up numbers will be issued.
3. Entries should arrive at the parade prepared with throws and decorations. Cars will not be allowed to make deliveries to entries already in line. REMEMBER TO HAVE PLENTY OF WATER FOR YOUR PARTICIPANTS!!
4. Drivers must park parade unit and stay with it. Do not leave your vehicle unattended.
5. This is a family event. Float music must be approved prior to the start of the parade, must not contain indecent lyrics, and must be at an acceptable level of volume. Indecent clothing or behavior will not be permitted.
6. Alcoholic beverages will not be allowed on parade units (floats).
7. Approved throws include individually wrapped candy, doubloons, plastic cups and beads. Other throws differing from the above mentioned, must be approved prior to the start of the parade.
8. This is a non-stop parade. Do not stop along the route to perform.
9. Maximum parade unit height is 13 feet. No exceptions.
10. No ATVs or UTVs will be allowed.
11. City of Lake Charles street sweepers will follow immediately after the parade in an effort to help keep our city clean. Please discard all "trash" and boxes in appropriate trash receptacles after the parade.
12. If you have a special request or need additional information concerning your float, please call 337-491-9176.

#### Parade Entry Form

Individual/Organization: \_\_\_\_\_

Contact Person: \_\_\_\_\_

Mailing Address: \_\_\_\_\_

City: \_\_\_\_\_ State: \_\_\_\_\_ Zip: \_\_\_\_\_

Daytime Phone: \_\_\_\_\_

Cell Phone: \_\_\_\_\_

Email: \_\_\_\_\_

\_\_\_\_ Truck or trailer @ approx. \_\_\_\_\_ ft in length

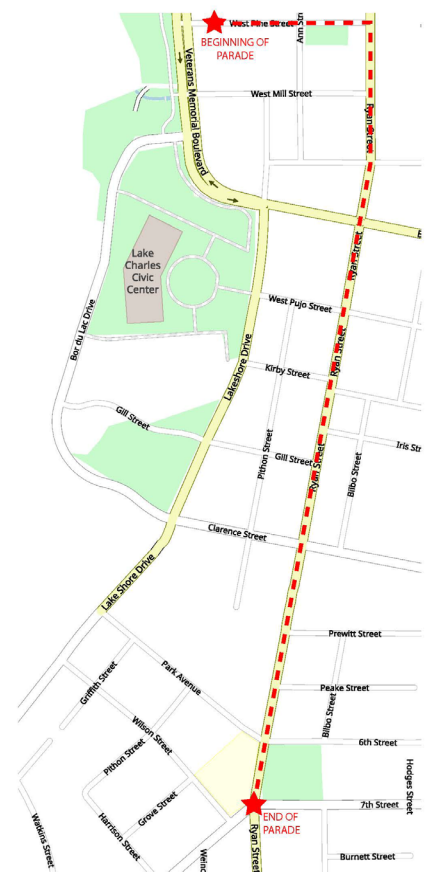
\_\_\_\_ Float & towing unit with driver @ approx. \_\_\_\_\_ ft in length

\_\_\_\_ Car and Driver Other (specify): \_\_\_\_\_

\_\_\_\_ Marching Unit with number of individuals: \_\_\_\_\_

Marching Band \_\_\_\_\_ Yes \_\_\_\_\_ No

Type of music, if any, to be played: \_\_\_\_\_



**NO FEE TO ENTER**  
**ENTRY DEADLINE: July 3**

**Return this form to**  
**Katie Harrington**

**PO Box 900, Lake Charles, LA 70601**

**Phone 337-491-9176**

**FAX 337-491-1206**

**[katie.harrington@cityoflc.us](mailto:katie.harrington@cityoflc.us)**